



PensMeadowSchool
Living, Growing, Learning

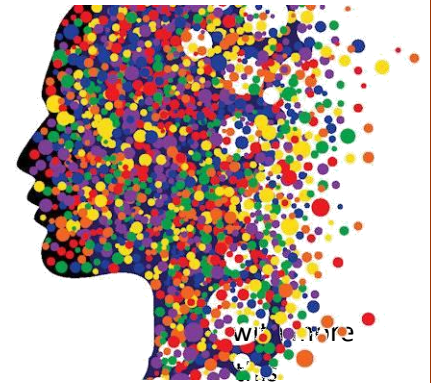
Safeguarding Newsletter

25th March 2019

Hub of Hope Mental Health Database

The Hub of Hope is the world's first of its kind mental health database bringing grassroots and national mental health services together in one place for the first time ever. Using the location of web browser or mobile devices, the cloud-based web application allows anyone, anywhere to find the nearest source of support for any mental health issue, from depression and anxiety to PTSD and suicidal thoughts, as well as providing a 'talk now' button connecting users directly to the Samaritans.

It is currently the biggest and most comprehensive resource of its kind, than 1,200 validated support networks already registered on the web app and number increasing each day. It has been endorsed by the Samaritans and 25 other national mental health support organisations and trusts.



Find Mental Health support in your area here: <https://hubofhope.co.uk/>

Positive relationships

The NSPCC has published a free online resource to help empower children aged 7-11 to make positive relationships matter in their school and community. Through starter activities and case studies, Primary AGENDA suggests inclusive, creative and rights-based approaches to a range of issues including: feelings and emotions; friendships and relationships; body image; consent; gender and sexuality equality; and equity.

Source: [NSPCC Learning](#) **Date:** 19 March 2019

Further information: [AGENDA wales](#)

NSPCC Learning

Funding children's services

The Public Accounts Committee has published a report on funding for children's services in England. Findings include: the Department for Education (DfE) cannot explain the wide variation between local authorities in the activity and cost of children's social care, the increasing use of residential care is placing local authorities under extreme financial pressure and there is a lack of evidence on the effectiveness of early intervention in children's social care. Recommendations include: the DfE should set out what improvements it is seeking in children's social care by 2022; and the DfE should develop and lead on a cross government strategy for raising the quality in children's social care.

Source: [The Public Accounts Committee](#) **Date:** 22 March 2019

Further information: [Transforming children's services \(PDF\)](#)

Multi Agency Referral Form - MARF

The Multi Agency Referral Form (MARF) has been updated and is now available at the below link:

<http://safeguarding.dudley.gov.uk/report-it/>

 **Dudley Safeguarding**
protecting children, young people and adults at risk